

TRIBOLOGIK® NEWSLETTER

ISO 17025:2005

www.tribologik.com

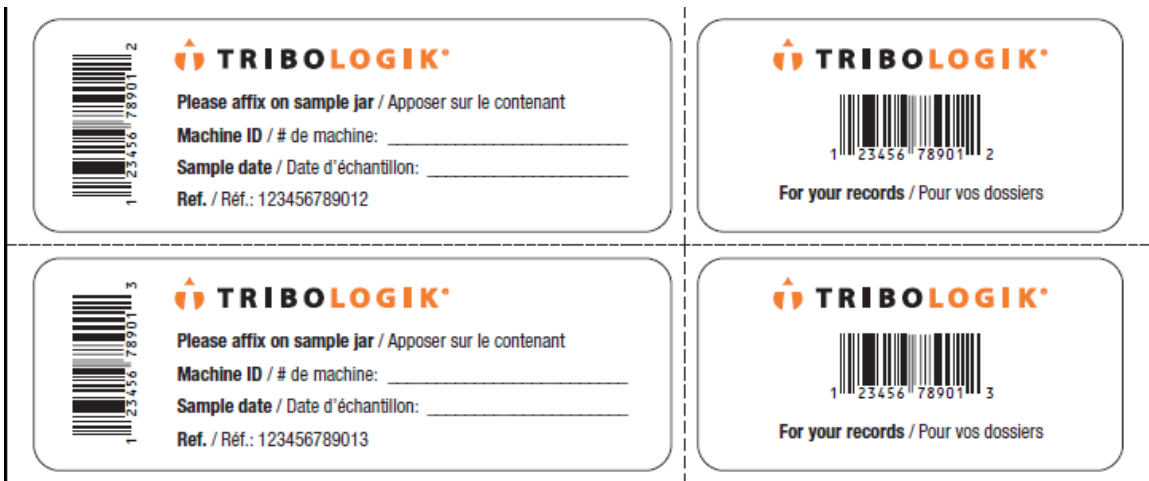
January 2016



New from Tribologik's Barcode Labels

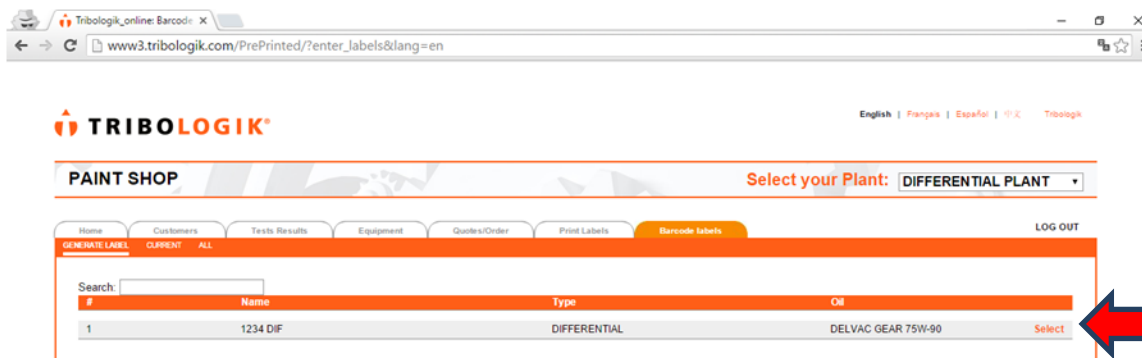
As seen below is our new barcode labels by Tribologik that will be shipped along with your sampling bottles.

Both labels are self-adhesive. On the left side is the label to affix to the bottle. On the right, for your records. All you have to do is enter Machine ID and Sample Date.



On the Tribologik web site, enter your **User name** and **password** in the Customer login window.

1. Go to the **"Barcode Labels"** tab.
2. Select the machine that you intend to submit by clicking on **"Select"**.



3. You will then be on the "**Generate Label**" page where you are to enter all data on that chosen unit which is to be completed on -line: Time on oil – Time on equipment - Test Package – Oil replaced? Yes, or No – Filter replaced? Yes, or No. If you have previously advised the laboratory the required test package, then it will be automatically populated by the system. If not, then please add the required test package.

The screenshot shows a web browser window with the URL www3.tribologik.com/PrePrinted/p_label.php?lang=en&edit=1. The page title is "Generate Label - 1234 DIF". The Tribologik logo is at the top. Below it, the form is titled "Generate Label". The form contains several input fields: "Plant Name" (DIFFERENTIAL PLANT), "Machine Name" (1234 DIF), "Time on Oil HRS/ML S/KM" (200), "Time on Equipment HRS/ML S/KM" (200), "Sample Date (YYYY-MM-DD)" (2016-01-15), "Tests/Package" (PRAN), "Oil replaced?" (No), and "Filter replaced?" (No). There is an "Enter/Scan barcode" field with a text input box. At the bottom of the form are two buttons: "SUBMIT" and "BACK TO BARCODE LABELS". A red arrow points to the "Enter/Scan barcode" field.

4. Scan or enter the barcode as seen on the label. If you have to type in the barcode numbers manually, please **double check for typing errors as each code is unique** and each digit must match exactly those on the label.
5. Affix self-adhesive barcode label to bottle and complete as indicated retaining the smaller label for your reference.
6. Press the "**SUBMIT**" button and then you will return to the previous page for additional units to be sent.
7. Ship to laboratory the bottle which now includes the barcode label for analysis.

Upon receipt of the sample at the laboratory, PMC/Tribologik receiving employees only have to scan the label and forward the bottle to the lab. The requested tests will be performed and your report will be generated automatically with all relevant information and no mistakes.

Don't forget to scan or enter the barcode number on the label. Please affix on the sample bottle and click on SUBMIT.

Contact your Account Manager for further information.